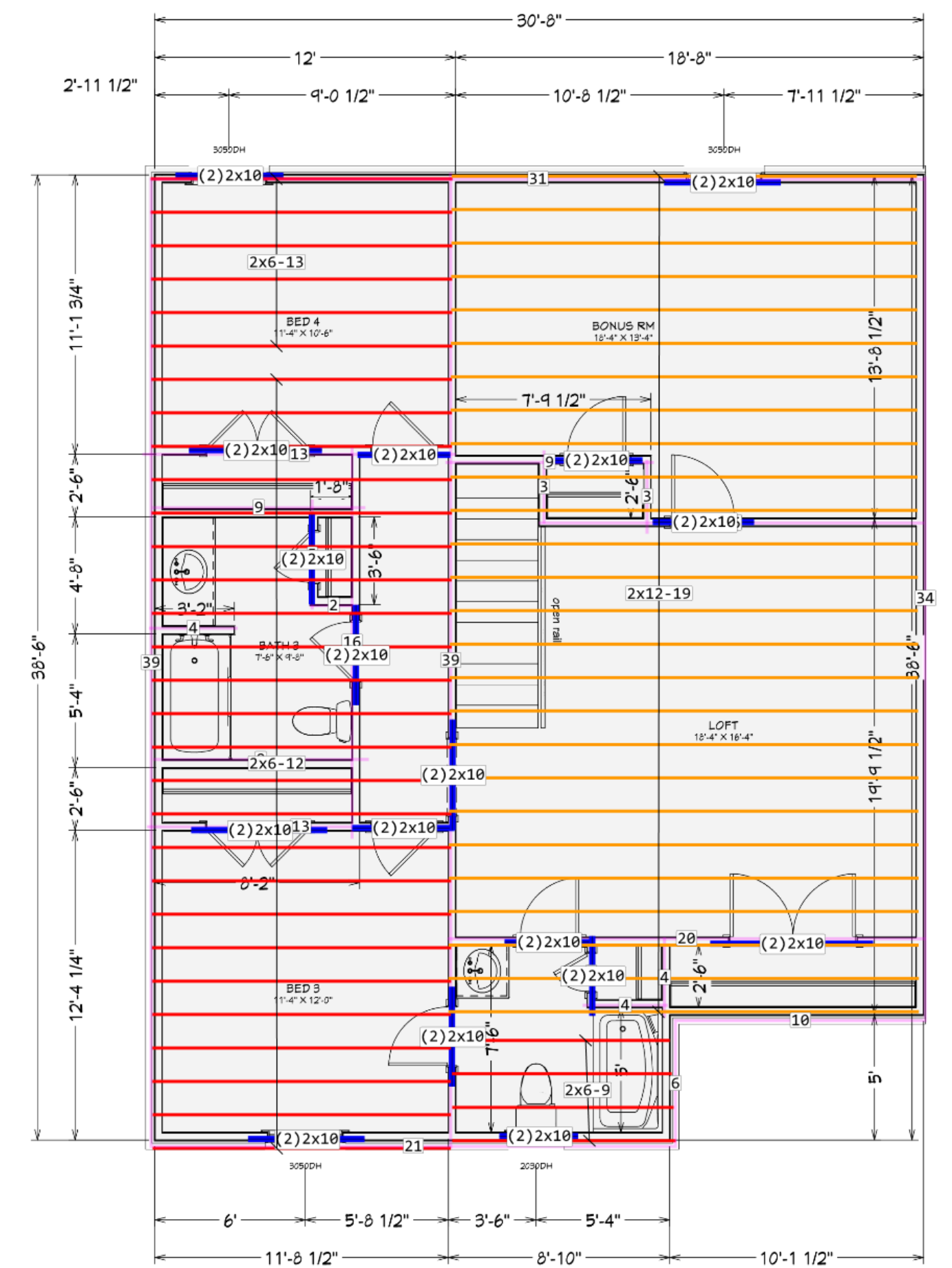


1st Floor
9' CEILINGS



2nd Floor
8' CEILINGS

RIGHTS TO THIS PLAN BELONG
TO POTTS CONSTRUCTION LLC

REVISION TABLE	NUMBER	DATE	REVISION BY	DESCRIPTION

POTTS CONSTRUCTION LLC
PO BOX 2844 HUNTSVILLE
35804
256-337-5643

DRAWINGS PROVIDED BY:
PLAN 2997

DATE:

4/24/2020

SCALE:

1/4"=1'

SHEET:

P-1

Tag	Qty	Product	Len	Cut Logic
Ceiling Joist				
2x6	2	2x6 SYP #2	18'2x(2/9)	
2x6	3	2x6 SYP #2	16'3x(1/7 1/9)	
2x6	16	2x6 SYP #2	14'16x(1/13)	
2x6	44	2x6 SYP #2	12'1x(1/5 1/7) 11x(2/6)	
2x6	9	2x6 SYP #2	23x(1/12) 9x(1/11)	
2x6	9	2x6 SYP #2	10'9x(1/10)	
Ceiling Joist				
2x8	21	2x8 SYP #2	16'10x(1/16) 11x(1/15)	
2x8	12	2x8 SYP #2	14'12x(1/13)	
2x8	1	2x8 SYP #2	12'1x(1/11)	
Ceiling Joist				
2x10	7	2x10 SYP #2	20'7x(1/19)	
Ceiling Joist				
2x12	15	2x12 SYP #2	20'15x(1/20)	
Ceiling Joist				
2x6	2	2x6 SYP #2	18'2x(2/9)	
2x6	6	2x6 SYP #2	14'6x(1/13)	
2x6	24	2x6 SYP #2	12'24x(1/12)	
Ceiling Joist				
2x12	26	2x12 SYP #2	20'26x(1/19)	
Beam				
2x12	1	2x12 SYP #2	14'1x(2/7)	
2x12	2	2x12 SYP #2	10'2x(1/10)	
2x12	2	2x12 SYP #2	8'2x(1/8)	
Floor Decking				
		40'3/4"x4'x8' OSB T&G		

These placement plans for the products specified were based on the information provided to us. This service is solely intended for product application insurance. It is not intended to circumvent the need for a design professional as determined by the building codes. The designer of record and the contractor are responsible for ensuring that the products are compatible with the overall project.

